

Z509 12" HEAVY-DUTY DRAIN



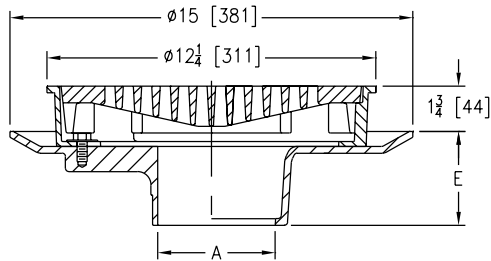
ENGINEERING SPECIFICATION

Zurn Z509 12" diameter top drain features Dura-Coated cast iron body with bottom outlet, seepage pan, and combination membrane flashing clamp and frame for heavy-duty tractor grate.

NOTES

†Add 3/16" to 1-3/4" dimension and 3/4" to 1-1/4" dimension for ZB and ZN

A Pipe Size inch [mm]	Grate Open Area sq in [cm ²]	Approximate Weight lb [kg]
3 [76], 4 [102], 6 [152]	30 [194]	38 [17]



PREFIXES	DESCRIPTION	PIPE SIZE	LIST PRICE
Z509*	D.C.C.I. Body and Top	3", 4", 6"	1,139.00
ZB509	D.C.C.I. Body Assembly with Polished Bronze Top	3", 4", 6"	1,768.00
ZN509	D.C.C.I. Body Assembly with Polished Nickel Bronze Top	3", 4", 6"	1,864.00

OUTLETS (SPECIFY PIPE SIZE IN INCHES AND TYPE OF OUTLET)				
OUTLET TYPE		PIPE SIZE/OUTLET TYPE	E BODY HT. DIM.	ADD
IC	Inside Caulk	3IC, 4IC, 6IC	3-1/2"	N/C
IG	Inside Gasket	3IG, 4IG, 6IG	3-1/2"	N/C
IP	Threaded	3IP, 4IP, 6IP	3-1/2"	80.00
NH	No-Hub	3NH, 4NH	3-1/2"	N/C
		6NH (IP w/Z1040)	6"	N/C
NL	Neo-Loc	3NL, 4NL	2-5/8"	N/C
SUFFIXES				
				ADD
-AR	Acid Resisting Epoxy Coated Cast Iron			850.00
-DG	Duresist Grate			261.00
-DX	Dex-O-Tex Flange (Z and ZN Only)			781.00
-G	Galvanized Cast Iron			565.00
-HP	Heel-Proof Grate			N/C
-P	Trap Primer Connection			150.00
-PH	Grate with 3/8" Dia. Openings (Z only)			520.00
-S	Secondary Strainer			58.00
		Z		344.00
		ZB		433.00
			ZN	489.00
⊖ -TC	Neo-Loc Test Cap Gasket (2", 3", 4" NL Bottom Outlet Only)			24.00
-TS	Top Secured with Slotted Screws			129.00
-TSP	Trap Seal Protection Device (Size Matches Drain Outlet Selected, See Z1072)			POA
-V	Backwater Valve-Ball Float Type (See Z1099)			-
-VP	Vandal-Proof Secured Top			149.00
-Y	Sediment Bucket			206.00

BEST SELLERS	LIST PRICE
Z509-3NH-P-S-Y	1,553.00
Z509-3NL	1,139.00
Z509-3NL-HP	1,139.00
Z509-3NL-P-S-Y	1,553.00
Z509-3NL-S-Y	1,403.00
Z509-4IP-AR-DG-VP-Y	2,685.00
Z509-4NH	1,139.00
Z509-4NH-AR-VP-Y	2,344.00
Z509-4NH-DG	1,400.00
Z509-4NL	1,139.00
Z509-4NL-DG-Y	1,606.00
Z509-4NL-P-Y	1,495.00
Z509-4NL-Y	1,345.00

Supplied By:



877-903-7246

www.commercialplumbingsupply.com